



# LVEM5

## Benchtop Electron Microscope



New!

### TEM BOOST – Enhanced Imaging Module

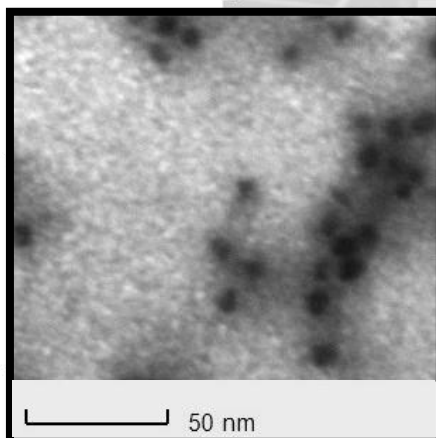
**TEM BOOST** is a hardware-based enhancement of TEM imaging mode that provides increased total magnification and higher resolving power in the TEM images.

Enhanced image quality throughout the entire TEM magnification range, coupled with a much wider range of magnifications makes this optional upgrade a significant improvement over the already powerful base model.

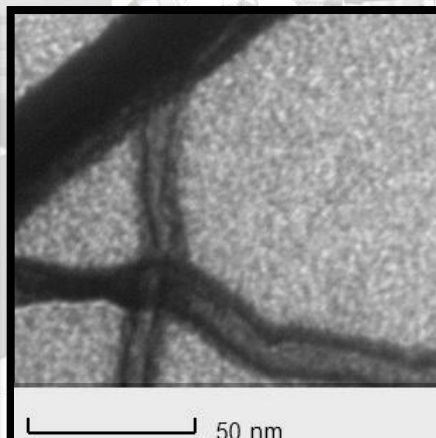
The **magnification range is improved to 1,400-700,000 times**. Combined with an improved **resolving power of 1.2 nm**, this yields a TEM image resolution of 0.2 nm/pixel at maximum magnification.

For nanoparticle analysis this means significantly improved size and shape measurements of objects in the 2-10 nm range. For thin sections this means larger field of view and enhanced image quality throughout the full range of magnifications. Many other application areas will benefit from this improvement.

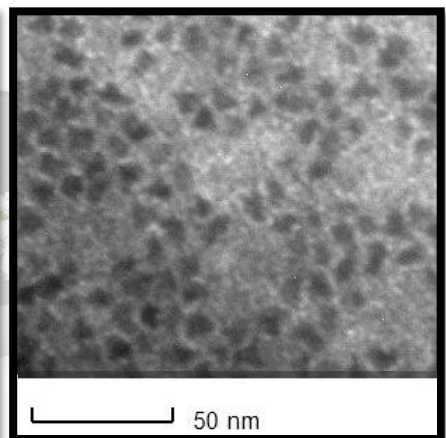
#### Selected Images



Ferretin Nanoparticles



Carbon Nanotube



6nm CdSe Nanoparticles



Delong America  
LVEM5 Benchtop TEM  
TEM · SEM · STEM · ED

[info@lv-em.com](mailto:info@lv-em.com)  
[www.lv-em.com](http://www.lv-em.com)  
514.904.1202

# Enhanced Imaging Module

---

**Nanoscale** from your benchtop

**Delong America**

514.904.1202

[www.lv-em.com](http://www.lv-em.com)

[info@lv-em.com](mailto:info@lv-em.com)

**LVEM5 Benchtop TEM**

**TEM • SEM • STEM • ED**

